



Mar 4, 2013 - HGSI Minor Product Maintenance Update
High Growth Stock Investor V8 23081 (replaces build 23039)

Designer Bug Fix

Fixed the problem of Designer folder icons changing unexpectedly distorting the group lists.

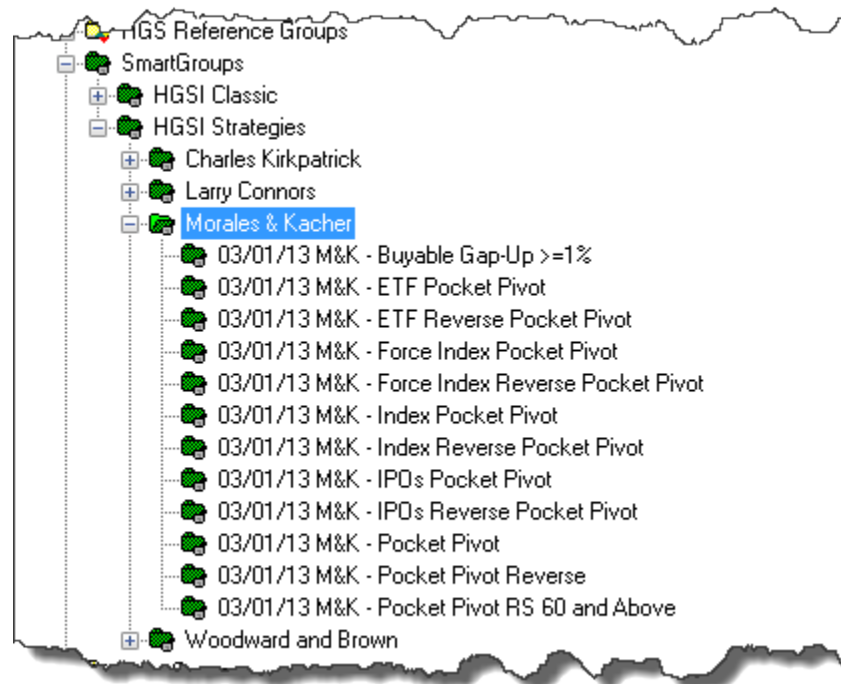
Designer SmartGroups

Added SG-WB Stocks and Groups Moving to Downside



Designer SmartGroups (cont'd)

Added M&K – Buyable Gap Up $\geq 1\%$ to Morales & Kacher Pocket Pivots plus several others previously only found in the Warehouse. Top 25 stocks are selected if 25 are available.



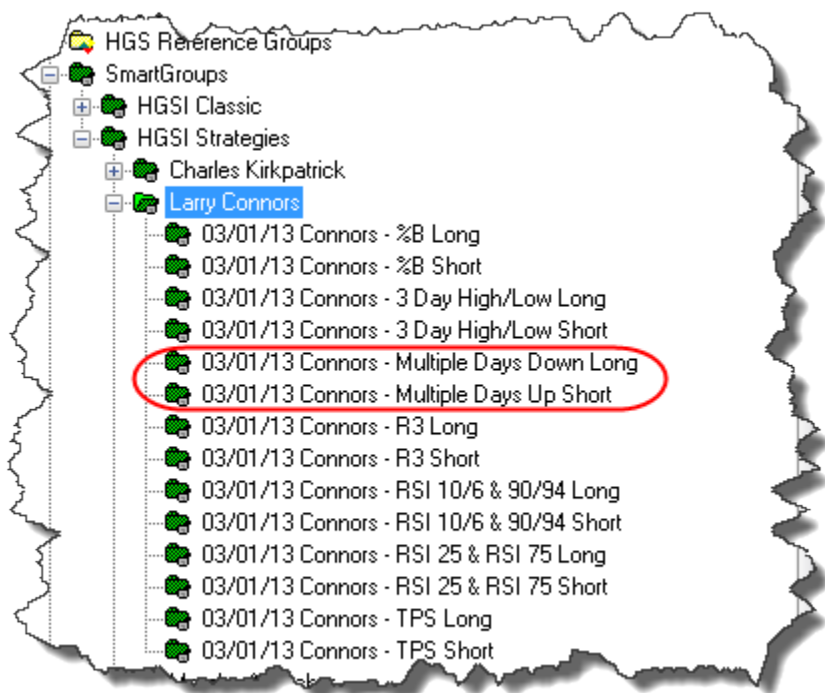
Designer SmartGroups (cont'd)

Revised the list of ETF's being used with the Larry Connors 7 High Probability ETF Trading strategies. Previously only the 20 ETFs in his book were used. Now all ETF's are used with the filters.

To continue using the 20 ETF's you can make a User Group and apply the Warehouse Views for the 7 strategies against the User Group. (DIA, EEM, EFA, EWH, EWJ, EWT, EWZ, FXI, GLD, ILF, IWM, IYR, QQQ, SPY, XHB, XLB, XLE, XLF, XLI, XLV)

Corrected a naming error for Multiple Days Down Long and Multiple Days Up Short. Previously the Long was shown as Up and the Short was shown as Down.

These SmartGroups were also available as Warehouse Views. They both use the same filters and combo rank and should provide the same lists.



March 4, 2013 - All the above changes are included in the High Growth Stock Investor V8 build 23081. It replaces the previous build 23039

Feb 6, 2013 - HGSI Product Upgrade

High Growth Stock Investor V8 23039 (replaces build 22792)

New Splits & Dividends (S&D) charting indicator. Indicator is located in the Price and Volume section under Charting Indicators. When this indicator is added to a chart, the splits and dividends will be displayed at the bottom of the chart window. Arrow colors can be changed. Option is available to show only splits or dividends. When the chart cross hair is placed over the date of the split/dividend the information will also be displayed in the charting data window. If the chart is in yearly mode dividends for the year will be in the data window.





High Growth Stock Investor

Boeing Company (BA)	
Date:	12/31/12
High:	77.600
Low:	66.8200
Close:	75.3600
Open:	74.7000
Volume:	1,098,106,240
Moving Average Crossover 17 Period: 56.7794	
Dividend 0.44 on 2/8/2012	
Dividend 0.44 on 5/9/2012	
Dividend 0.44 on 8/15/2012	
Dividend 0.44 on 11/7/2012	

New S&D report. The report is accessed by doing a right mouse click on the charting window containing the S&D indicator and selecting Indicator Reports.

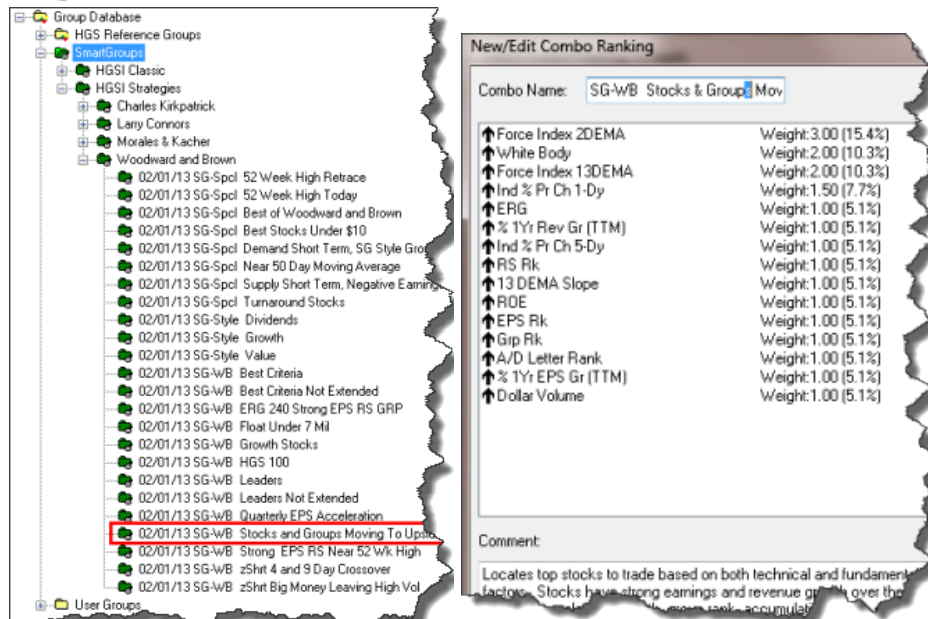
Splits & Dividend Report		
Security : Boeing Company (BA)		
Date	Hi Split	Low Split
06/09/97	2	1
06/10/85	3	2
04/15/80	3	2
Date	Dividend	
11/07/12	0.44	
08/15/12	0.44	
05/09/12	0.44	
02/08/12	0.44	

New Smart Group – “SG-WB Stocks and Groups Moving To Upside”

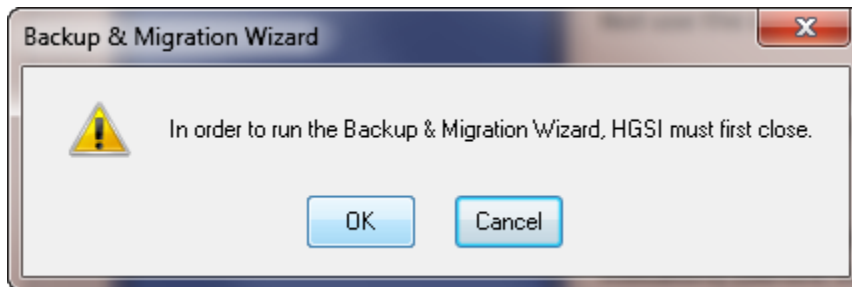
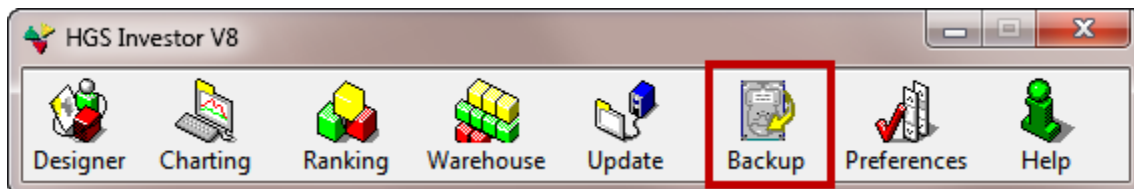
Stocks at the top of the list are driven there by both fundamentals and technical demand based upon the Force Index, Dollar Volume and Group movement. This is a combo rank driven list.

See Ron Brown’s January 26, 2013 Weekly Market Report for a detailed explanation about the filter and combo rank that drives this Smart Group. Dave Steckler picked up on Ron’s work the following day and did a very nice job of explaining it on his blog. Links: [Ron Brown Report](#)
[Dave Steckler Blog](#)

High Growth Stock...Investor

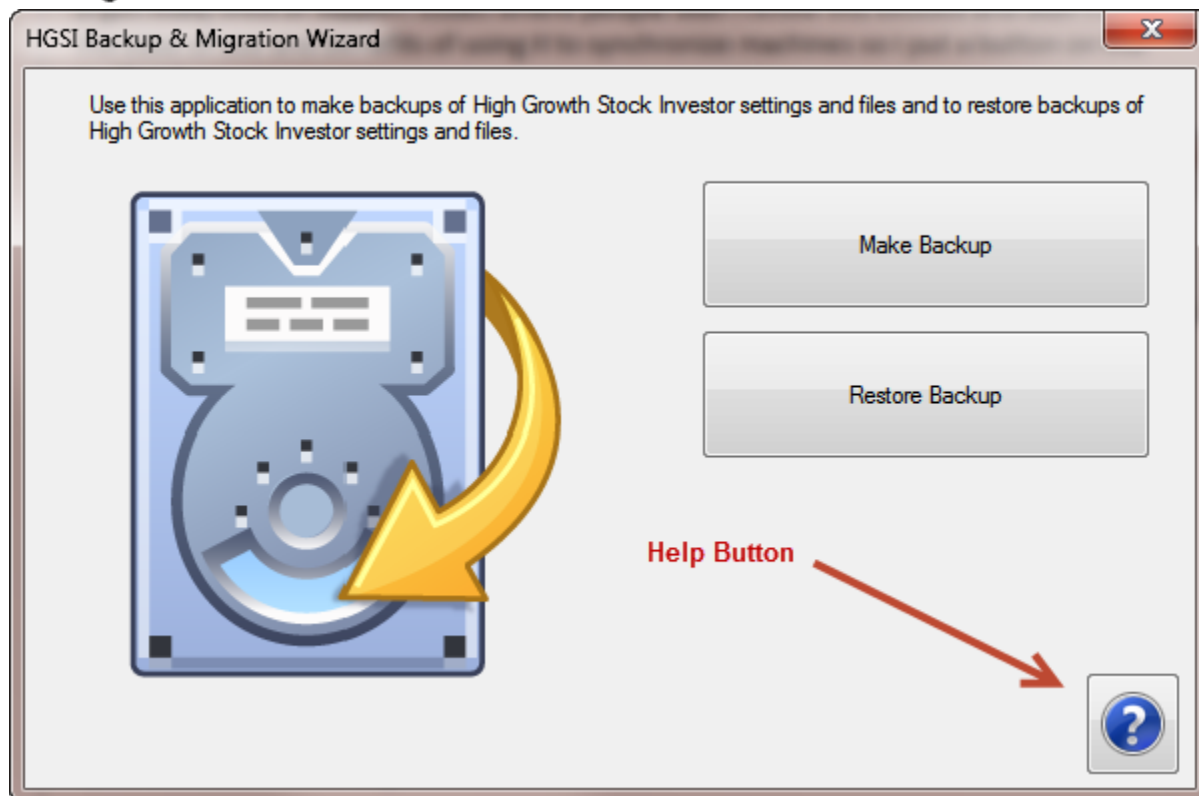


Improved Backup and Migration Wizard. Now works from the HGSI main toolbar. The images below are self-explanatory.

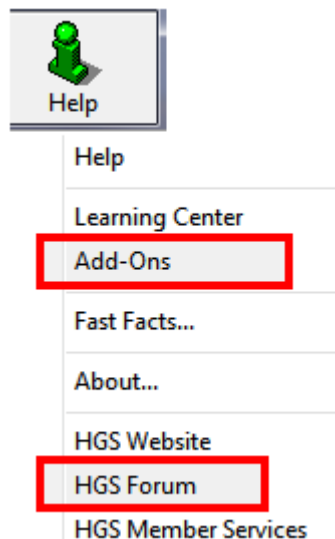




High Growth Stock...Investor



Improved Help menu. Added links for “Add-on” and “HGS Forum”.





Fixed the Visual Strategy Backtest (VSB) indicator. If you marked the radial button to exit on the next day open, VSB used the next day close.

Fixed the Visual Strategy Backtest (VSB) colors in the Data Window. Current version 22792 uses the same color for "in trade" and "out of trade".

Fixed the HGSi Designer paste feature. If the same symbol appears more than once it will only be listed once in the list of found symbols.

Fixed the HGSi Designer paste feature that caused a crash on some computers.

February 6, 2013 - All the above changes are included in the High Growth Stock Investor V8 build 23039. It replaces the previous build 22792

December 12, 2012 Product Upgrade High Growth Stock Investor V8 22792 (replaces build 22269)

Introducing the HGSiv8 ***Visual Strategy Backtest*** Indicator (VSB)



Long term investors or short term traders get ready to manage your stock portfolio with more confidence and precision!

There are 3 core decisions you make when putting money into the stock market:



High Growth Stock Investor

- What to buy?
- When to buy (entry)?
- When to sell (exit)?

HGSI Investment Software already gives you great features to help in deciding **what to buy**. In this new release of the HGSI Investment Software there are new tools to test your strategies about **when to buy** and more importantly **when to sell**.



Take the ideas you have been rehearsing in your mind about what market and stock conditions you think should exist to buy a stock.

These ideas are your rules for entry. Write your rules using our simple filter language.

Now take your ideas about what conditions need to exist for you to sell. These are your rules for exit.

The two sets of rules, entry and exit, become your strategy and work as a system. Together they tell the VSB indicator what to do. The results will be a visual chart plus a numeric data display showing how the strategy performed for profit/loss/drawdowns.

With over 350 technical data fields, many different strategies can be created and tested.

Tell me more!

The 6 strategies used in the following examples are provided with this release.

In the first example below, the Visual Strategy Backtest indicator is in a window labeled 4DMA crossed 17DMA Strategy, it's the name of the strategy being tested.

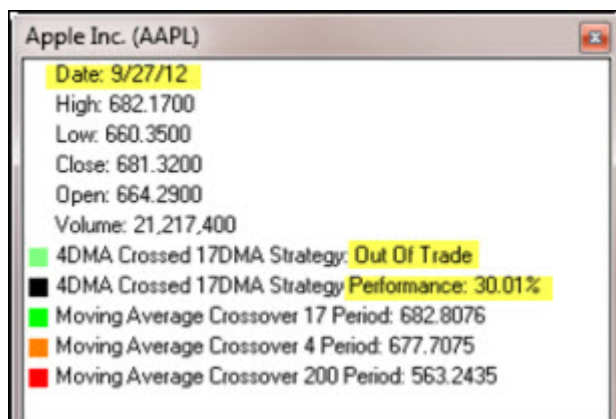
The Details:

- When the 4DMA crosses above the 17DMA you enter the trade
- When the 4DMA crosses below the 17DMA you exit the trade
- Green means you are in the trade
- White space between the green means you are out of the trade
- The performance line for the trade is black
- Positive performance is above the horizontal dotted line
- Negative performance is below the dotted line
- Performance (positive or negative) is expressed as a percent

High Growth Stock Investor



Using the chart cross hairs and data window you can get detailed information anywhere along the timeline. The cross hairs are positioned on 9/27/12 in the chart above showing that you are out of the above AAPL trade with a 30.01% gain for this strategy.





High Growth Stock...Investor

Want to compare multiple strategies? Simply create another window in your view for each additional VSB indicator. (see next page)

High Growth Stock...Investor

This example shows 5 additional windows, each containing a different VSB strategy.



High Growth Stock...Investor

Apple Inc. (AAPL)	
Date:	12/7/12
High:	555.2000
Low:	530.0000
Close:	533.2500
Open:	553.4000
Volume:	28,134,500
W&B %B * Bandwidth Strategy:	Out Of Trade
W&B %B * Bandwidth Strategy	Performance: 37.40%
Connors %B Strategy:	In The Trade
Connors %B Strategy	Performance: -6.00%
Connors %B Strategy:	Trade Entry Date: 09/27/12 Trade Exit Date: 12/07/12
Connors %B Strategy:	Trade Entry: 681.32 Trade Exit: 533.25
Connors %B Strategy:	Trade Change: -21.73%
Connors 3-Day High/Low Long Strategy:	Out Of Trade
Connors 3-Day High/Low Long Strategy	Performance: -7.25%
Force Index 2 and 13DEMA Strategy:	Out Of Trade
Force Index 2 and 13DEMA Strategy	Performance: 32.54%
Bongo Daily and Weekly Strategy:	Out Of Trade
Bongo Daily and Weekly Strategy	Performance: 39.37%
4DMA Crossed 17DMA Strategy:	Out Of Trade
4DMA Crossed 17DMA Strategy	Performance: 30.01%
Moving Average Crossover 17 Period:	562.5429
Moving Average Crossover 4 Period:	548.7825
Moving Average Crossover 200 Period:	601.3604

Performance of the 6 strategies:

39.37% Bongo Daily and Weekly
 37.40% W&B %B*Bandwidth
 32.54% Force Index2 and 13DEMA
 30.01% 4DMA Crossed 17DMA
 -6.00% Connors %B
 -7.25% Connors 3 Day High/Low

Indicator Reports are available for each strategy. The following is for the Bongo Daily and Weekly Strategy.

Visual Strategy Backtest							
Security : Apple Inc. (AAPL)							
Visual Strategy Backtest Name : Bongo Daily and Weekly Strategy							
Visual Strategy Backtest Comment : Backtest an investment strategy.							
Entry filter : HGSI Str... Bongo Daily and Weekly is YES (Enter)							
Exit Filter : HGSI Strat... Bongo Daily and Weekly is NO (Exit)							
Backtest Start date: 01/01/12							
Total trades: 3							
Total return: 39.37%							
Max Drawdown: 13.57%							
Trade Enter Date	Trade Enter	Trade Exit Date	Trade Exit	Max Drawdown	Trade Change	Trade % Change	Performance % Change
01/04/12	413.44	04/23/12	571.70	13.57%	158.26	38.28%	38.28%
07/06/12	605.88	07/26/12	574.88	8.05%	-31.00	-5.12%	31.20%
08/06/12	622.55	10/02/12	661.31	7.72%	38.76	6.23%	39.37%

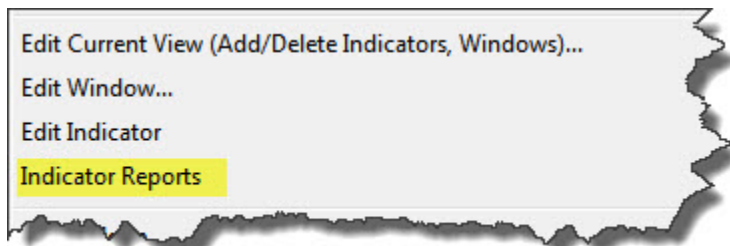


MORE CHARTING FEATURES

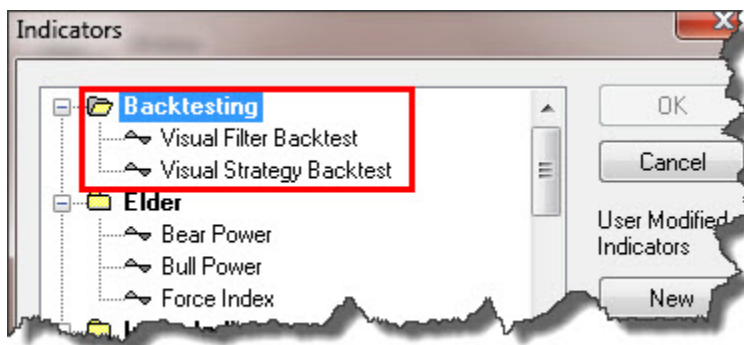
Visual Filter Backtest Indicator

- Significant speed improvements
- Warning messages are now given if the VFB indicator filter contains fields that cannot be back tested

NEW Indicator Report – Right mouse click on a charting indicator. If there are any indicators that offer reports they will be listed. Right now only the Visual Strategy Backtest and the Visual Filter Backtest indicators have reports.



Indicator List – Reorganized the list of charting indicators to include a new Backtesting section.



Bingo Market Indicator – Changed the RSI default from 33.5 to 33.0.

Fundamental Panel – Changed how HGSI picks the font to use for the fundamental panel to fix a problem with text being cut off for some users.

Data Window – Now shows a friendly filter name for VFB and VSB indicators.



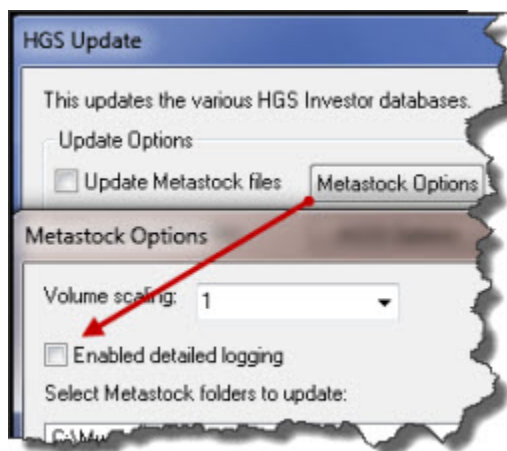
High Growth Stock...Investor



UPDATE FEATURES

Announcements – During the nightly update if there are announcements or private web mail to be shown to the user but the users browser doesn't open HGSi would display an error message and wait for the user to click an OK button. This would stop any scheduled auto updates from taking place. HGSi no longer displays a message requiring the “OK” response.

Metastock Options – New check box option for advanced logging creates additional detail about results of the current update to previously exported Metastock files. Logging only applies to daily updates, not initial exports.





DESIGNER FEATURES

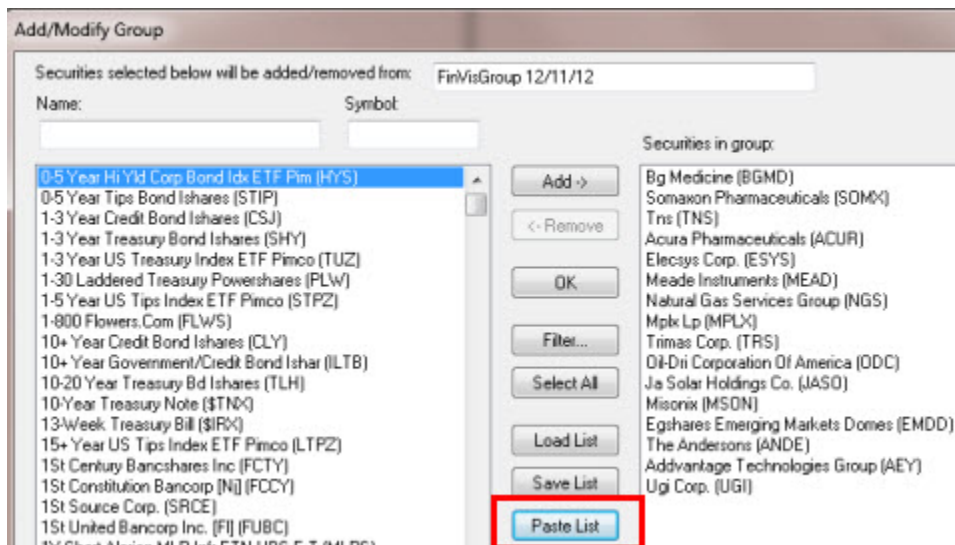
New Paste List feature – Copy text from other applications, e.g. Excel, web browser, etc. HGSI looks through the copied text for valid symbols and pastes them into a User Group.

Copy it from here:



Ticker	Last	Change	Volume	Signal
BGMD	3.39	154.89%	9033268	Top Gainers
SOMX	2.65	80.27%	2216757	Top Gainers
TNS	20.75	42.51%	9048267	Top Gainers
ACUR	3.49	42.45%	10084321	Top Gainers
ESYS	4.00	17.30%	135620	Top Gainers
MEAD	1.93	21.38%	30885	Top Gainers
NGS	16.75	1.70%	84190	New High
MPLX	31.16	2.20%	97586	New High
TRS	27.29	1.71%	460034	New High
ODC	26.93	5.86%	25155	New High
JASO	3.42	2.40%	277581	Overbought
MSON	7.00	7.69%	48401	Overbought
TNS	20.75	42.51%	9048267	Unusual Vol
ACUR	3.49	42.45%	10084321	Unusual Vol
EMDD	21.63	0.56%	43060	Unusual Vol
BGMD	3.39	154.89%	9033268	Unusual Vol
ANDE	42.71	3.09%	259085	Upgrades
AEY	2.02	1.00%	8623	Upgrades

Paste it to here:



Add/Modify Group

Securities selected below will be added/removed from:

Name: Symbol:

Securities in group:

- Bg Medicine (BGMD)
- Somaxon Pharmaceuticals (SOMX)
- Tns (TNS)
- Acura Pharmaceuticals (ACUR)
- Elecsys Corp. (ESYS)
- Meade Instruments (MEAD)
- Natural Gas Services Group (NGS)
- Mplx Lp (MPLX)
- Trimas Corp. (TRS)
- Di-Dri Corporation Of America (ODC)
- Ja Solar Holdings Co. (JASO)
- Misonix (MSON)
- Egshares Emerging Markets Domes (EMDD)
- The Andersons (ANDE)
- Advantage Technologies Group (AEY)
- Ugi Corp. (UGI)

Buttons: Add, Remove, OK, Filter..., Select All, Load List, Save List, **Paste List**

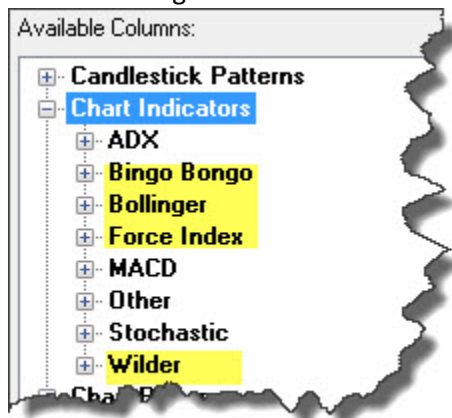


WAREHOUSE AND FILTER FEATURES

- %OScore data now works correctly with Spectrum Analysis (PIE Chart)
- %B*Bandwidth: Color for values less than -0.004 changed from Red to Maroon



- “Other” data fields under Chart Indicators for the Warehouse and Filters reorganized. Added four new categories for ease of use:



December 12, 2012 - All the above changes are included in the High Growth Stock Investor V8 build 22792. It replaces the previous build 22269

April 15, 2012

High Growth Stock Investor V8 22269 (replaces build 22265)



Today we are announcing the *HGSIv8 Backup and Migration Wizard*

The Wizard will safely backup, restore and migrate your HGSIv8 filters, chart views, warehouse views, combo ranks and user groups. It has been tested by HGSI users for over a month and gets very high marks for ease of use.

There are only two buttons to click, one for backup the other for restore. The Wizard finds all the files needed for a complete backup of all your work and makes a copy in the default folder under My Documents or any location of your choosing. Each backup is saved with a creation date in the file name giving the backup library a historical collection of previous backups. If you have multiple computers on a network, select a network drive and easily keep multiple computers updated with all your changes. Look for the HGSI Backup and Migration Wizard in the High Growth Stock Investor V8 folder under Windows All Programs. Click here for the [Wizard Video](#) located in the Learning Center.

March 9, 2012

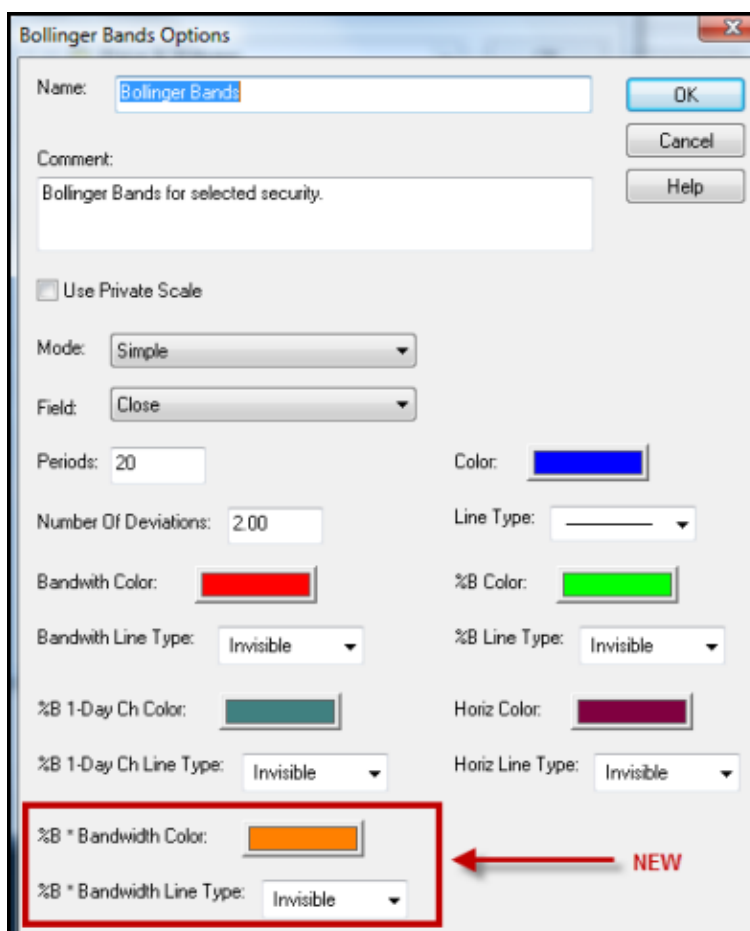
High Growth Stock Investor V8 22265 (replaces build 22243)

Fixes a data updating problem when a symbol is changed. It should be installed by everyone.

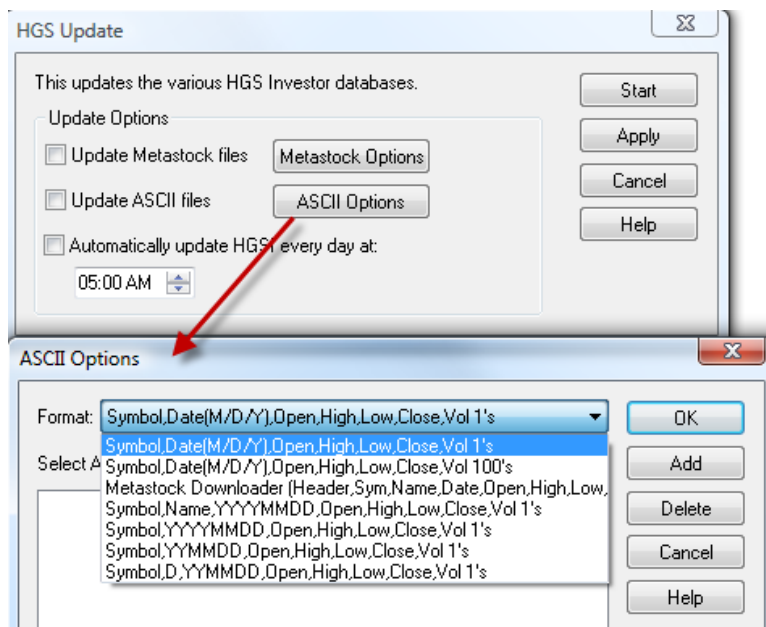
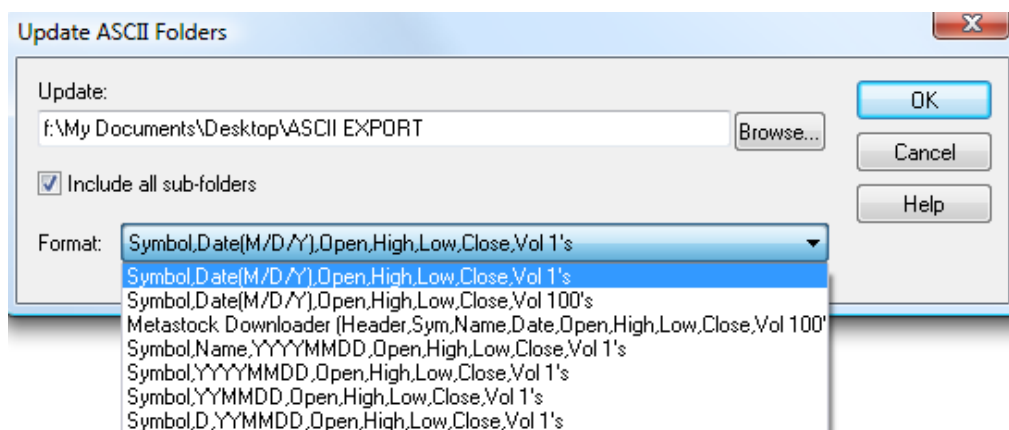
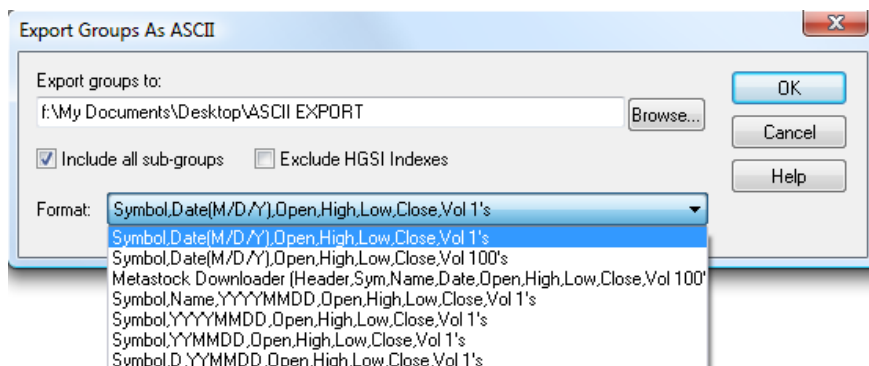
March 3, 2012

High Growth Stock Investor V8 22243 (replaces build 22070)

- Fixes the CUSIP Data problem
- Adds the %B * Bandwidth Option to the HGSI Charting Indicator for Bollinger Bands. For more information on using this new option, contact [Ian Woodward](#) or [Ron Brown](#) of W&B Investing.



- Enhanced the HGSiv8 Designer ASCII Utilities to include several new data export formats and now includes the option to keep exported ASCII file up-to-date. (NOTE: there is no auto-add an export file path to the nightly ASCII update list like there is for Metastock. Exported files need to be added manually to the ASCII Options for HGS Update)





January 15, 2012

High Growth Stock Investor V8 22070 (replaces build 22047)

Fixes several internal data field problems. There are no new features or changes required by users of the software.

January 1, 2012

High Growth Stock Investor V8 22047 (replaces build 22043)

Fixes dates formatted as YYYY-MM-D (e.g. 2006-12-1) in a filter. If the date was formatted as YYYY-MM-DD (e.g. 2006-12-01) the filter worked properly. This fix corrects that problem allowing dates to be entered either way.



December 30, 2011

High Growth Stock Investor V8 22043 (replaces build 21955)

1. The Designer "Load List" button that is used to load a list of symbols into a User Groups didn't properly report the symbols that were not available in the HGSI database.
 2. Filters that didn't have any filter rules (an empty filter) would cause the filter file to not be properly saved creating a lost filter situation.
 3. Made minor speed improvement to the generating of HGSI group indexes that might be noticeable during the daily update.
 4. System file locations are now displayed in the "Fast Facts" dialog found under the Help button of the HGSI Main Toolbar.
 5. Metastock export now reports better errors messages and adds error messages to the Metastock log file during daily data updates.
 6. Metastock export now handles updating Metastock securities found in a Metastock directory that do not have any previous data records.
 7. Metastock directories have symbol quantity limits. When a limit is reached the HGSI Metastock export automatically creates additional directories and now adds them to the list of Metastock directories to be updated. In the past the user had to manually add the extra directories to the list.
 8. Several HGSI system data files are now coded with identification information that relates them to the build number of the HGSI software. This feature will avoid the problem of mistakenly mixing system data files with the wrong copy of the HGSI software.
 9. Miscellaneous other internal system changes.
-

December 3, 2011

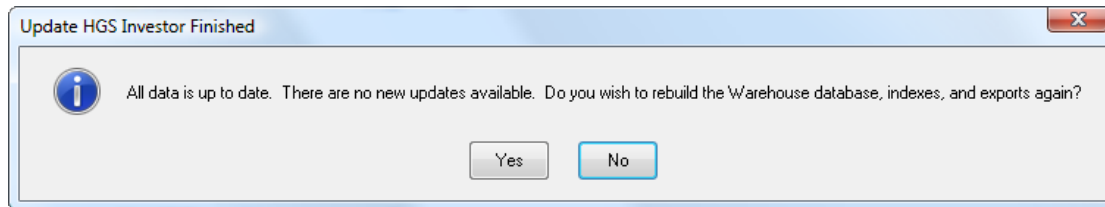
High Growth Stock Investor V8 21955 (replaces build 21828)

New Fields for Warehouse and Filters

FIELD NAME	FIELD CATEGORY NAME	COMMENT
%B * Bandwidth	Chart Indicators > Other	Woodward & Brown Last Close-Lower BB / Middle BB > 0.03 Green >= 0.01 & <= 0.03 Yellow < 0.01 Red
%B * Bandwidth 1-Dy Chg	Chart Indicators > Other	Woodward & Brown Same as %B * Bandwidth but with 1-Dy change
Gross Profit Margin	Fund-General	(Total Revenue – COGS) / Total Revenue
Net Profit Margin	Fund-General	(Net Income to Common Shareholders/Total Revenue)
% Vol/Greatest Prev 10-Day Up Vol	Technicals > Volume	Morales & Kacher Reverse (negative) pocket pivots. This is the inverse of what is currently installed from the Morales & Kacher book "Trade Like an O'Neil Disciple: How We Made 18,000% in the Stock Market.
% Range	Technicals > % Close	0% means the price closed on the low, 100% closed on the high. Other percentages are in between 0% and 100%
Is ADR	Company	Is ADR (American Depository Receipt) Includes/Excludes foreign securities from a group. Complete list is shown below. Is ADR Is Class Stock Is Common Is ETF Is Group Index Is IPO Is Market Index Is Optionable Is Preferred Is warrant

Other Changes:

1. Pressing Update when database is already up-to-date gives a option to continue to rebuild indexes, exports, etc.



2. The Charting View's last period used (daily/weekly/monthly/etc) is remembered and restored when leaving and returning to the Charting Window.
 3. Various internal system modifications.
-



November 1, 2011

High Growth Stock Investor V8 21828 (replaces build 20616)

This release completely replaces the Quotes Plus database with the new HGS Investor V8 database. All the previous HGS Investor software features work just as they did before, there are no changes. What will be different is the data, the installation process and the daily data updating.

Customers can login to their account at www.highgrowthstock.com/memberarea to download and install HGS Investor V8. Allow extra time for this first download, a new database will be installed onto your computer.

HGS Investor V8 installs as a new program. It is not an update to the V7 software. Both software installations can coexist on the same computer without conflicts but they cannot be running at the same time.

During the installation, HGS Investor V7 customers will have the option of transferring over all the Filters, Views, Combo ranks, Custom Pie Chart Slices for the Spectrum Analyzer and User Groups to HGS Investor V8.

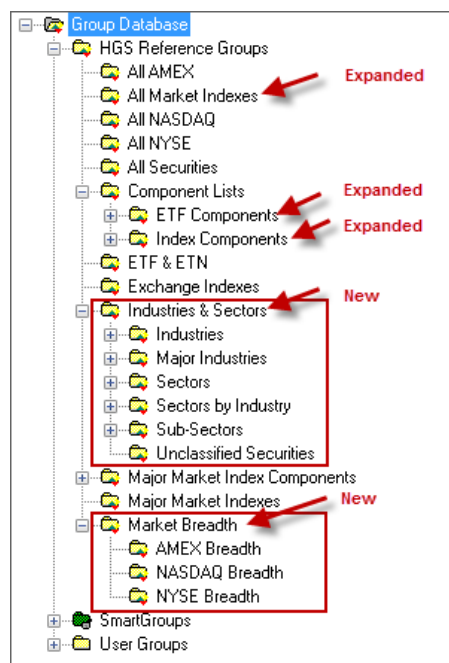
Version 7 is no longer available from the HGS Investor website. It is no longer supported. To continue using HGS Investor V7 with the Quotes Plus database and Quotes Plus software a separate QP data subscription is required. Contact Gary Lyben at gary@quotes-plus.com

The primary daily update from the HGS Investor servers is available at approximately 5:30pm ET. There are additional updates throughout the evening with adjustments and fundamentals. You can be notified up updates by checking at our Twitter page <http://twitter.com/#!/hgsalerts> or signup for HGSAlerts that go to your cell phone.

See more details below

DESIGNER

- **Industries & Sectors** – collects all the industry oriented folder together in one folder
- **ETF Components**– equity components for approximately 435 ETFs
- **Index Components** – market index components for 182 market indexes
- **All Market Indexes** – expanded from 214 to 662
- **Market Breadth (AMEX, NASDAQ, NYSE)** - There are 9 symbols for each exchange. (Advancing Stocks, Declining Stocks, Unchanged Stocks Advancing Volume, Declining Volume, Unchanged Volume, New Highs, New Lows)



WAREHOUSE VIEWS

HGSI Classic – 40 new Warehouse Views. Each view shows all the available data fields by category e.g. all the data fields for Technicals – Price Change; Rankings – Rank, etc. No Filters are used. Very handy for “viewing” the data fields that are available.





High Growth Stock Investor

NEW DATA FIELDS

- **Ern Due** - As a Warehouse column it shows the month/day/year when the next earnings report is expected.
- **Ern Due** – In a filter it can be used to find specific dates or date ranges. This is an example of a date range:

If Ern Due >= 11/1/11

And Ern Due <= 11/30/11

Lists all the companies in a group with earning due dates for November 2011

(SEE HELP SYSTEM FOR MORE “ERN DUE” FILTER EXAMPLES)

- **Ern Due** – Shown on the Charting Panel for Earnings
- **Business Description** – Full business descriptions are now available in the Charting Panel for Company information.

View: Default View			
Microsoft Corp. (MSFT)			
Last Qtr Date:	6/11	Ern Due:	1/26/12
Revenue:	17,367	EPS:	0.69
TTM Revenue:	69,943	TTM EPS:	2.64
% 12Mo Rev Chg:	8.3%	% 12Mo EPS Chg:	35.3%

Microsoft Corp. (MSFT)			
Name:	Microsoft Corp.	Sector:	Information Technology
Symbol:	MSFT	Industry:	Systems Software
Exchange:	NASD	Sic Code:	7372 - Prepackaged Software
Business:	Microsoft develops, manufactures, licenses, and supports a wide range of software products for a multitude of computing devices. Microsoft software includes scalable operating systems for servers, personal computers, and intelligent devices; server applications for client/server environments; knowledge worker productivity applications; and software development tools. The Company's online efforts include the MSN network of Internet products and services and alliances with companies involved with broadband access and various forms of digital interactivity.		