

QUICK START (allow approximately 20 minutes)

Objective: To show a quick start method for finding investment opportunities using High Growth Stock Investor's ready-to-use stock lists housed in our SmartGroup Directory. You will be shown some basic features of the HGSI software tools that are used to review and analyze information about the securities in the list. You will learn to navigate seamlessly and effortlessly starting in the Designer tool and moving to the Warehouse then Ranking and finally the Charting tool. What you learn can be applied to any list of stocks. (Tip: In HGSI "list" and "group" are synonymous)

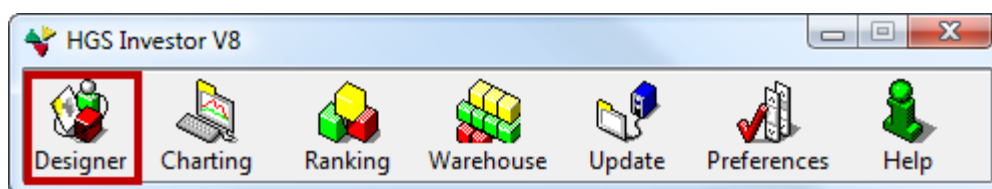
Lesson Overview: Quick Start uses a "Growth" stock list. It is one of many ready-to-use stock lists found in the HGS Designer Group Database under SmartGroups. Stock lists generated by SmartGroups are updated daily. The list you have today will be different tomorrow. SmartGroups use filters to select desirable securities to build the list. The list is then sorted using our unique combo ranking feature. This feature combines the weighted ranking for each of the selected data fields considered important enough to bring the top 25 best stocks to the top of the list.

How to proceed: Follow each of the steps below using your installed copy of HGSI.

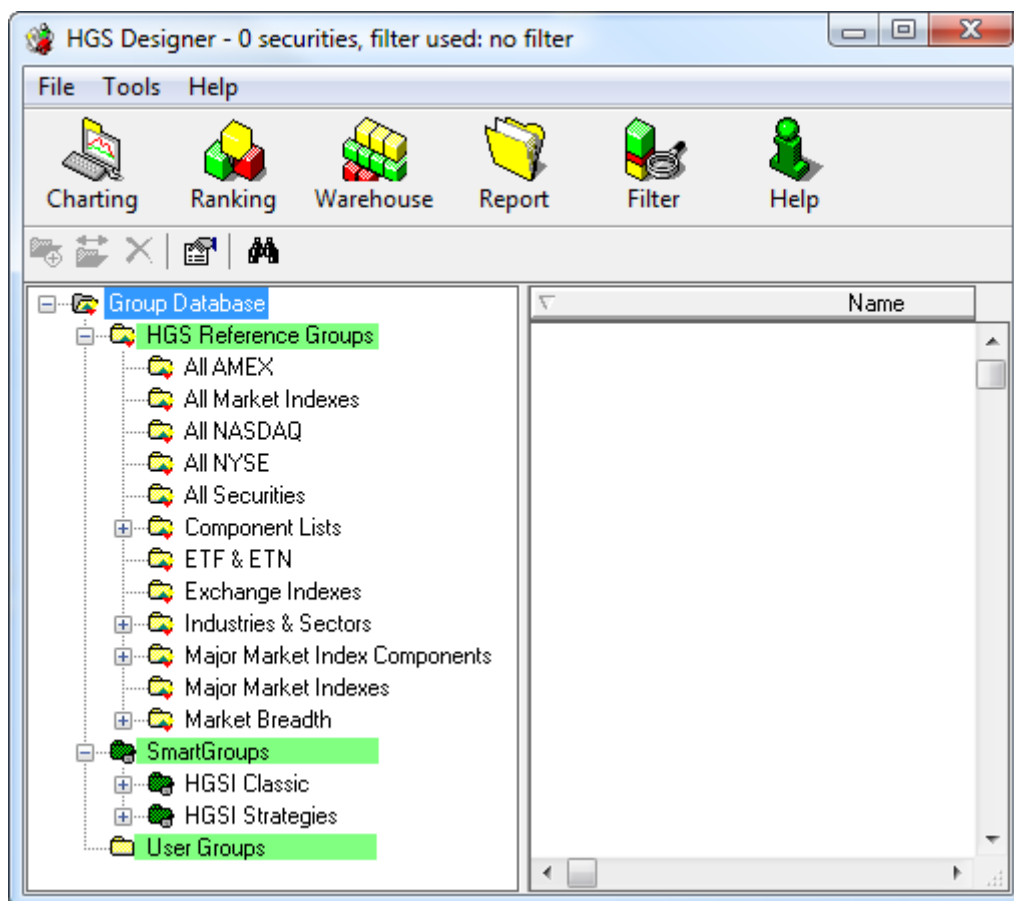
NOTE: this lesson cannot cover all the details of each tool you will be using. You can find more information about each tool in the Help system (on your Icon Toolbar) or on the HGSI website [Learning Center](#).

If you have questions about this lesson or comments that will help us improve it please contact us at support@highgrowthstock.com.

1. Start High Growth Stock Investor



2. Click on Designer. It opens with the Group Database, a repository for all HGSI and User created groups. On the left side you will see three types of groups. Adjust your HGSI folders to look like the left side of the image below.



This table describes the three major group types found in the Designer

HGS Reference Groups – These groups are preselected lists that you will work with and use for referencing. They are divided into categories like indexes, ETFs, industry groups, major exchanges, etc., for ease of screening and data manipulation. They appear as yellow folders with the HGS icon located in the lower right hand corner of the folder. Securities contained in these reference groups are predetermined by HGS staff. The folders are updated periodically to keep them current.

SmartGroups – These are dynamic lists of securities generated HGS staff using internally developed filters. They represent our top stock selections on any given day and are organized into a variety of groups. Dynamic lists will change day to day when you do the daily database update. SmartGroups are shown as green folders with the HGS icon located in the lower right hand corner of the folder. There are two categories of SmartGroups:

HGSI Classic: These lists are general purpose and are useful to a wide variety of users. List names identify what the list includes.

HGSI Strategies: These lists use filters that implement methods of various strategy experts such as Woodward & Brown, Larry Connors, Gil Morales & Chris Kacher, Charles Kirkpatrick, and others.

User Groups – These are premade lists made by the user. Groups can be added here using drag-n-drop from the HGS Reference Groups, or the SmartGroups. They can also be added using the Designer Add Group or using the Warehouse.

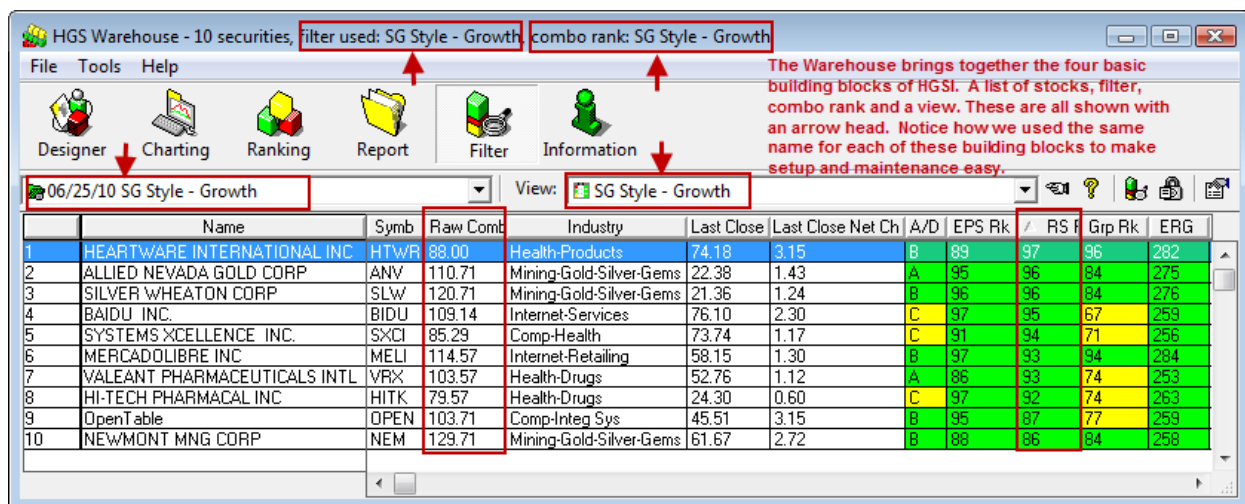
- In the left window panel of the Designer, click on SmartGroups > HGSI Strategies > Woodward and Brown > SG-Style Growth. NOTE: The date to the left of the folder shows when it was last updated.

The right window panel will display the stocks selected by the Growth filter plus the Group Index. You can read about the Group Index at HGSI Help. Group indexes are a unique feature of HGSI that enable comparison of different groups based on index rankings and other analysis.

To get more information about this list of growth stocks we will go to the Warehouse. The Warehouse is where hundreds of descriptive fields of fundamental and technical data are available in a spreadsheet format for scanning, filtering, displaying and ranking.

- On the Designer toolbar click the Warehouse icon (make sure you still have the Growth list selected)

The Warehouse window opens with the “SG-Style Growth” list name showing in the Group List window. This is the same list you were viewing in the Designer.



- Click on the View window down arrow and select HGSI Strategies > Woodward and Brown > SG-Style Growth. This will bring up a specific View for use with the Growth list. (HGSI provides a variety of pre-made views for your use and you can edit them or customize your own.)

When the Warehouse View appears, notice how all the building blocks that we have been using; SmartGroups, Filters, Combos Views all have the same name “Style – Growth”. In the HGSI Strategies we use the same name for each of the building blocks so we have a consistent set. It makes it easier to put all of the pieces together. You can read more about these various building blocks in Help.

There are over 400 data fields that you can have as a column in the Warehouse View. The image above only shows a few fields. They should be similar to what you are seeing on your screen. I


wanted you to see the Industry so I moved it from the far right hand side of the View into the visible area. There is a complete list of all the data fields in the Help system.

- Click on the RS Rk column. It will sort the list high to low or low to high. The Warehouse Relative Strength Rank measures a company's price change over the past 12 months compared to all the other companies in the database. A "90" ranking means the 12-month price record outperformed 90% of all companies in the database. More weight is applied to the most recent quarter. Descriptions about all the data fields can be found in the Help system under "Warehouse"
- Click the Ranking icon on the Warehouse toolbar. Ranking is where relative comparisons are made between stocks for a specified period of time.

The Ranking window opens with the "SG-Style Growth" list name showing in the Group List window. This is the same list you were viewing in the Designer and Warehouse.

Name	Symbol	6/25/10	6/18/10	6/11/10	6/4/10	5/28/10	5/21/10	5/14/10	5/7/10
1. HEARTWARE INTERNATIONAL INC	HTWR	20.992	20.964	14.178	13.264	14.854	-2.9339	8.4335	
2. SILVER WHEATON CORP	SLW	18.076	11.17	8.8664	-14.428	2.4403	-8.709	17.379	
3. ALLIED NEVADA GOLD CORP	ANV	17.666	14.054	10.46	-4.3259	5.8628	-3.7746	17.494	
4. VALEANT PHARMACEUTICALS INTL	VRX	15.449	-1.3124	2.6949	-3.0136	5.6364	-0.22222	12.566	
5. NEWMONT MNG CORP	NEM	14.799	13.805	7.4704	-6.8655	0.80539	-6.669	8.6252	
6. OpenTable	OPEN	14.289	9.9685	0.81562	-7.3953	10.302	4.1173	7.5	
7. 06/25/10 SG Style - Growth Index	INDEX	11.346	8.9083	8.4622	-1.3901	8.6703	-3.5414	8.1017	
8. MERCADOLIBRE INC	MELI	7.5856	14.189	19.52	5.4017	12.736	-4.0857	-4.5421	
9. BAIDU INC.	BIDU	3.9618	1.202	2.8229	-1.0543	14.482	2.8362	14.563	
10. SYSTEMS XCELLENCE INC.	SXCI	3.4947	2.3654	9.397	4.4415	16.282	-4.1039	-0.014659	
11. HI-TECH PHARMACAL INC	HITK	3.2724	6.0487	6.0905	-1.0929	1.457	-8.2203	2.4548	

- Click on the Filter Button and select No Filter. It will be at the bottom of the list of filters. Click on OK. Notice that the list now includes the SG Style – Growth Index
- Click on the Tools Menu on your top Tool Bar and select Options. Select Percent Change in the Options Window. Choose 3 for the Number of weeks and click OK. The Percent Change, 3 Weeks, will show in the title bar.

10. Click on the View window down arrow  and select Raw RS

The body of row and columns will be displaying the actual percent change values in each column for the current plus two prior weeks (this is the 3 week % change)

Some Comments about the Ranking Window:

- By including the group index in the list, it gets ranked with the other stocks in the list. Any stocks above the index are doing better than the index. Those below the index are underperforming.
- Rankings are color coded for easy reference. **Green** means a stock has a rank between 80-99; **Yellow** between 60-79; **Red** between 1-59. We changed the View to Raw RS so we could see the actual Percent Change numbers that were ranked 1-99. Change the View to Relative Strength and the numbers 1-99 will appear again
- The first column in the Ranking window is dynamic and changes throughout the week. Once the week becomes history, the results for the week ending column will be the same week after week assuming nothing is changed. If price data in the master database changes for one or more of the companies it is reasonable to assume some of the historical ranking will also change. This tool is best used for to assist in near-term stock selection.
- The Ranking tool is interactive, if you change any of the following: the options, the list, the view or the filter, newly computed results will be instantly displayed. The Ranker is considered a power user's tool. When you close the Ranking tool the results are not saved. If you immediately restart the tool the results will be recomputed and displayed again.
- The Warehouse RS Rk and the Ranking tools RS Rk are different. The Warehouse Relative Strength Rank measures a company's price change over the past 12 months compared to all the other companies in the database. The Ranking tool measures a company's price change for each weekly column relative to the companies in the group. In this example 10 companies plus the index are being compared. If you change the option to 52 weeks, you are about as close as you can get to the Warehouse RS Rank but they will not be exactly the same. Trying to compare the RS Rank between the two tools is like comparing apples to oranges.

11. Click on the number 1 stock in the Ranking list (stock on the top of the list).

12. Click on the Ranking toolbar Charting icon.

The Charting Window will open with the stock that was selected. HGSI's Charting Tool provides more than 50 technical indicators for viewing on any stock or index.

Note: By double clicking on names in Warehouse and Ranking you will also generate a stock chart



13. Click on the View window down arrow and select HGS Classic > Classic Default View.

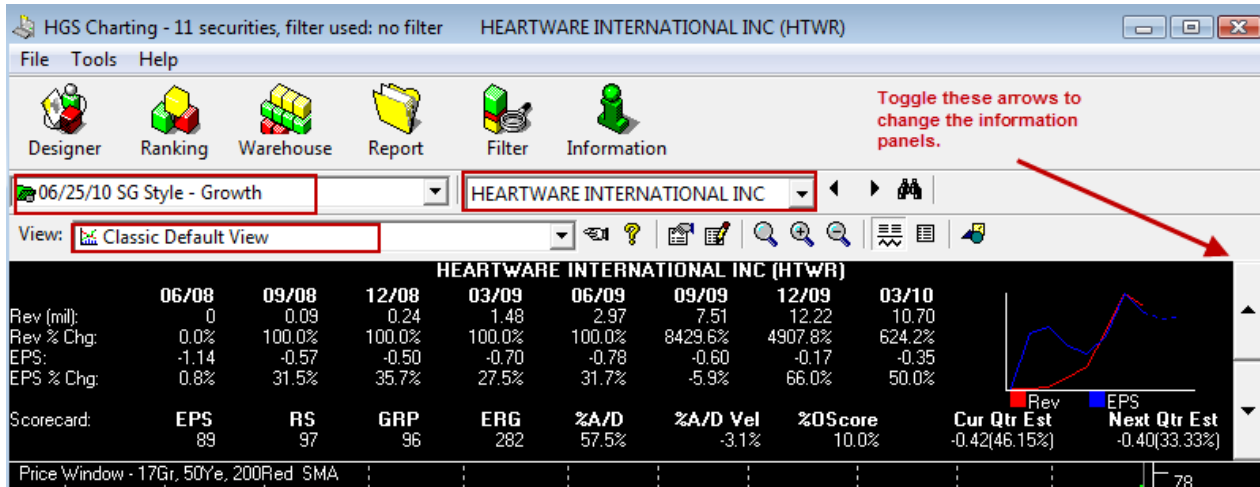
This is a good basic view showing the price window with a 17, 50 and 200 day moving averages. Finding stocks riding just above their 17DMA is considered a good stock. The Classic Default View has 2 windows, containing one or more indicators. Indicators are described in the Help system.

14. Click on the small + and – magnifying glasses to zoom the chart’s time frame in and out.


15. Click on the Security List down arrow . Notice that the list of securities from Ranking appear and are still in the same sequence as in the Ranker.

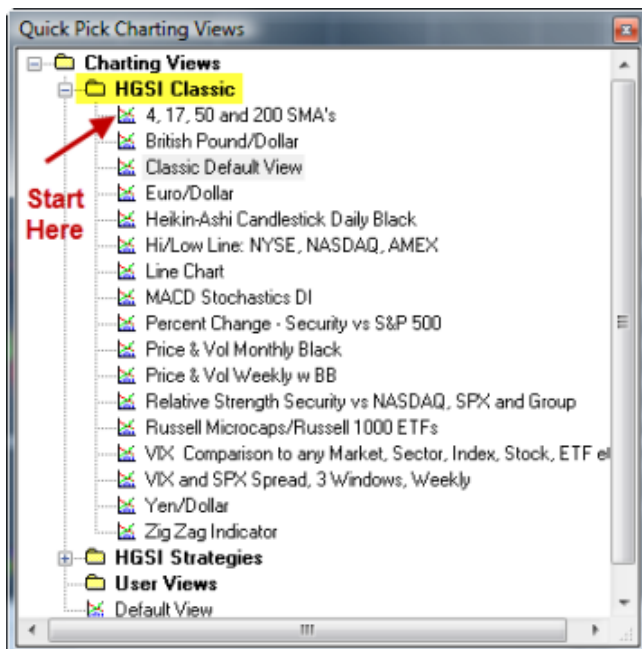
16. Toggle through the stocks in the group using the Previous/Next buttons that are next to the Security List drop down window.

17. Click the up/down buttons to the right of the company information panel to move between the five panels. In the image below the Scorecard panel is being shown. In this panel, you can immediately see the EPS Rank, RS Rank, GRP (Group) Rank and many other pieces of information.



There are times when you might want to look at a security using a variety of different chart views that are setup for specific purposes.

18. Click this mini icon  to open the Quick Pick Charting window that you can resize. In the Quick Pick Window, open the HGS Classic folder. Here you will find a variety of useful ready-to-use Charting Views.
19. Click on the 4, 17, 50 and 200 SMA's view. And watch the Charting window change to this view. Now use your keyboard up/down arrows to move through the list of Chart Views.



This completes the Quick Start Lesson. We recommend you go back to the Designer and select a different SmartGroup and walk through it again. You have only touched the surface of the Designer, Warehouse, Ranking and Charting tools.

GLOSSARY (*see HELP directory for more comprehensive descriptions*)

Designer
Charting
Ranking
Warehouse
Reference Groups
SmartGroups
User Groups
Filter
View
Combo Ranking
Raw RS
RS RK