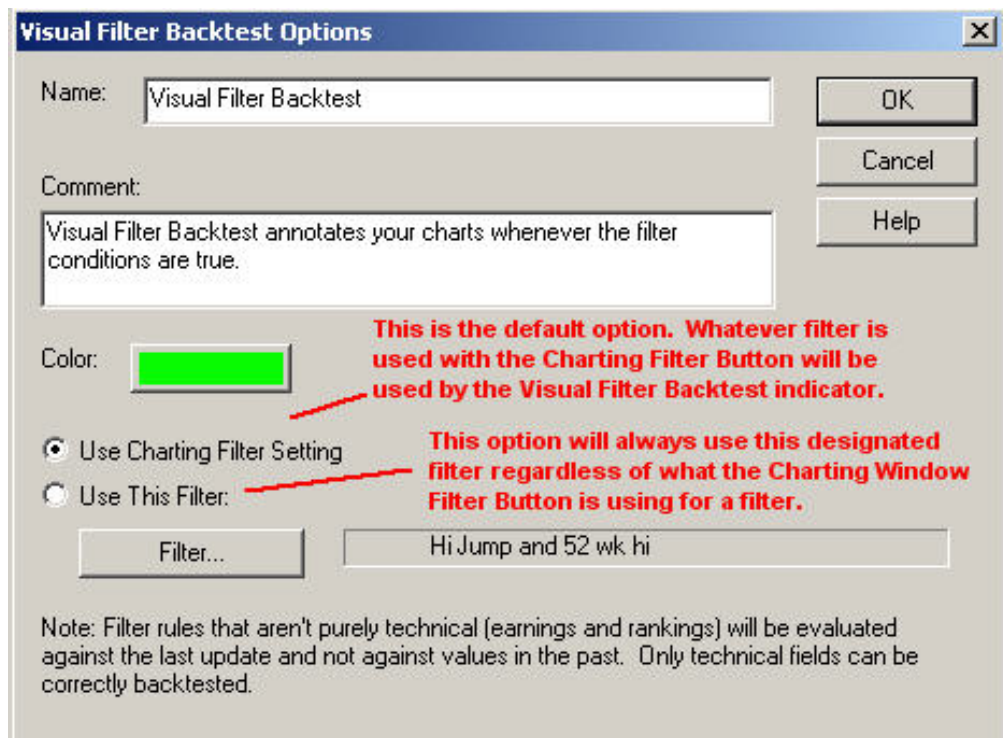


## Visual filter backtest

Visual Filter Backtest will show you the past performance of your filters. It was designed to be very easy to use. There is no scripting language or programming. VFB works on the chart just like any other indicator except it is using filters to tell it what to do.

How does it work.? Visual Filter Backtest has been implemented as an interactive Charting Indicator. All you need to do is add this indicator to any HGS Charting View Window. Once the indicator has been applied, use the Charting Filter button to pick any of your filters to visually see how that filter has performed historically for the security displayed in the Charting Window. When you change the Charting Filter, you are interacting with the VFB indicator and telling it to change the way the chart is annotated.

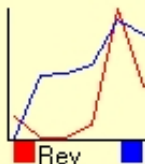


The VFB indicator uses the filter rules to check the current day and each historical day of the chart. Everytime the filter conditions are true, the VFB indicator annotates that day on the chart with a vertical colored bar with a color of your choice. If there are several days, weeks, or months where the conditions are true on a continuous basis, you will get a wide swath of uninterrupted background color on the chart.

The chart below is a simple but powerful example developed to show entry and exit points. In this example, the VFB indicator has been applied twice to the same window. Using the "Use This Filter" option. Each indicator uses a different filter. One VFB indicator is using a filter designed to identify when you might enter and hold the security in your portfolio (Green Background), the other VFB indicator is using a different filter designed to identify when you might exit or short the security (Red Background).

PETSMART INC (PETM)

	01/01	04/01	07/01	10/01	01/02	04/02	07/02	10/02
Rev (mil):	610.35	582.20	582.43	598.61	737.77	645.79	651.47	657.41
Rev % Chg:	7.1%	9.0%	8.1%	10.6%	20.9%	10.9%	11.9%	9.8%
EPS:	-0.24	0.01	0.02	0.05	0.23	0.17	0.15	0.14
EPS % Chg:	-500.0%	100.0%	166.7%	266.7%	195.8%	1600.0%	650.0%	180.0%



Scorecard:	EPS	RS	GRP	ERG	%A/D	%A/D Vel	%OScore	Cur Qtr Est
	98	94	35	227	55.6%	28.1%	10.0%	0.27(17.39%)

Price Window

**Green you are in the trade**  
**Red you are out of the trade**



Volume Window

